

Key features of The Baby Café

Mums surveyed told us what they thought were the key features of our model



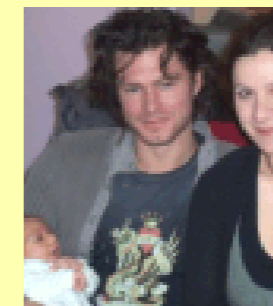
The Baby Café is a good way to get breastfeeding support

100%



Professional breastfeeding advice is important

100%



It is important to have somewhere where breastfeeding is seen positively

97%



Being with other breastfeeding mums is important

92%

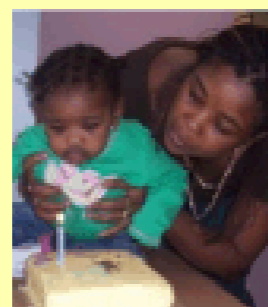
The Baby Café helps mothers to breastfeed for longer



92%

Pregnant women would find it useful to visit a Baby Café drop-in

79%



I need(ed) support to breastfeed my baby

97%